

# ORDER INFORMATION:

SDC1 - 031  $\frac{X}{a}$  -  $\frac{X}{b}$  -  $\frac{A/B/C}{c}$  -  $\frac{X}{d}$

a. Center Pin Diameter:

1:1.0  $\phi$

2:1.3  $\phi$

b. Post selection:

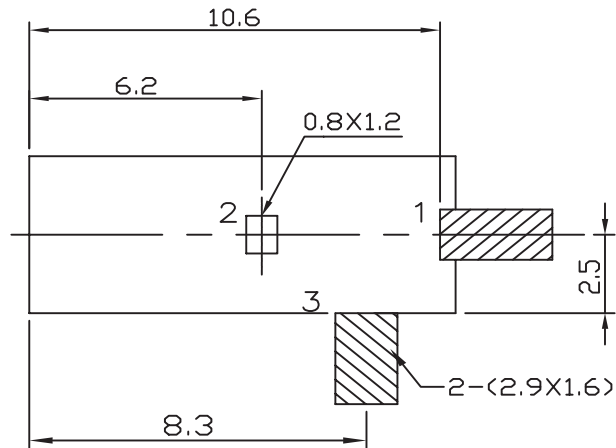
0: without post

c.Length/Width/Height:

A/B/C (A=11.1,B=5.0,C=7.4) (standard)

d. Pack selection:

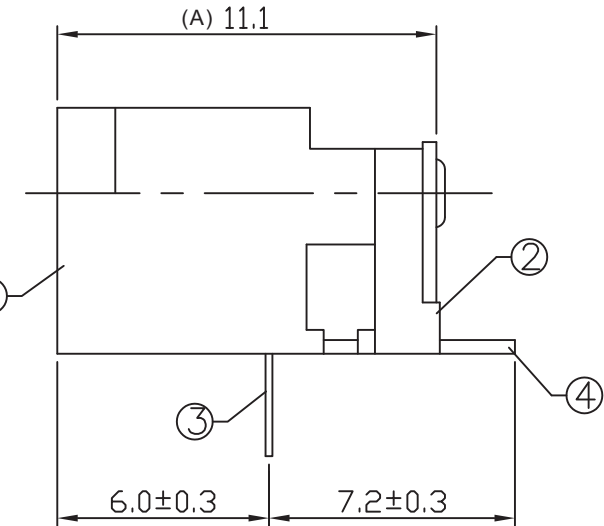
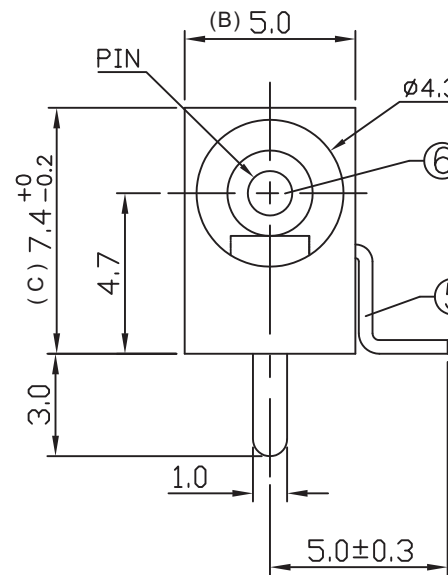
R:Reel Pack



T:1.6 Dimensions of PC board holes

Tolerance :  $\pm 0.1$ (Printed-top view)

SCHEMATIC		
SDC1-0311	$\phi 1.0$	
SDC1-0312	$\phi 1.3$	



6	PIN	1	BRASS	MB:Cu Ni PLATED
5	CURVE PIECE	1	BRASS	MB:Cu Ag PLATED
4	FLAT PIECE	1	BRASS	MB:Cu Ag PLATED
3	SPRING PIECE	1	SUS 301	
2	COVER	1	PA9T	
1	HOUSING	1	PA9T	
LTR	PART NAME	QTY	MATERIAL	REMARK

GENAL TOLERANCE $\pm 0.2$	DRAW M. C. WANG	PART NO SDC1-031X-X-A/B/C-X
	DESIGN H. D. LI	TITLE DC POWER JACK (SMT)
	CHECKED Y. M. LU	
	APPROVED J. F. KANG	
UNIT :mm		宏揚精密有限公司 HOJAR PRECISION CO., LTD.