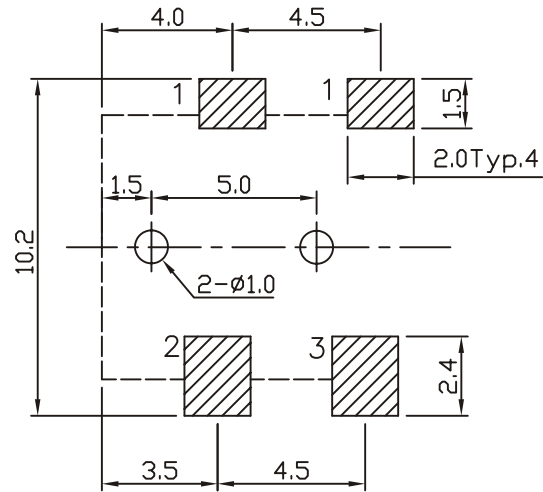


# ORDER INFORMATION:

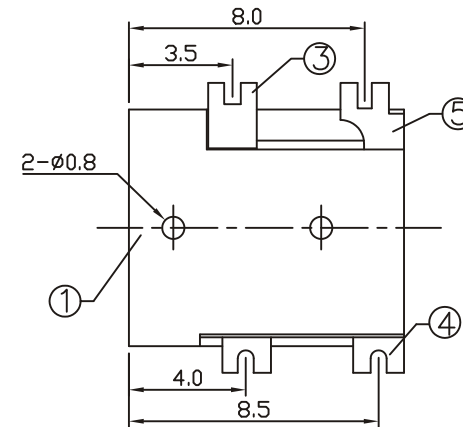
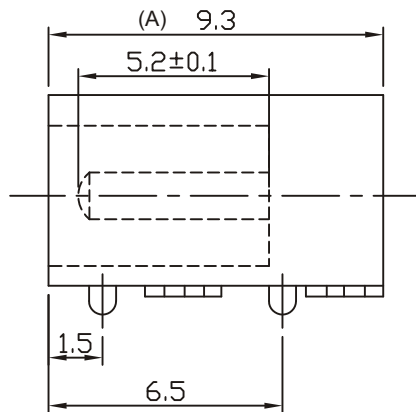
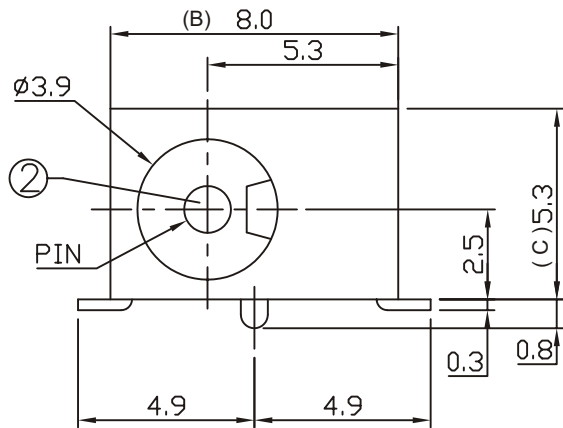
SDC1 - 041  $\frac{X}{a}$  -  $\frac{X}{b}$  -  $\frac{A/B/C}{C}$  -  $\frac{X}{d}$

- a. Center Pin Diameter:  
1: 1.0  $\phi$   
2: 1.3  $\phi$
- b. Post selection:  
1: with post
- c. Length/Width/Height:  
A/B/C (A=9.3, B=8.0, C=5.3) (standard)
- d. Pack selection:  
R: Reel Pack



SCHEMATIC		
SDC1-0411	$\phi 1.0$	
SDC1-0412	$\phi 1.3$	

T:1.6 Dimensions of PC board holes  
Tolerance :  $\pm 0.1$  (Printed-top view)



5	CURVE PIECE	1	BRASS	MB:Cu Ag PLATED
4	CONTACT FOOT	1	BRASS	MB:Cu Ag PLATED
3	SPRING	1	BRONZE	MB:Cu Ag PLATED
2	PIN	1	BRASS	MB:Cu Ni PLATED
1	HOUSING	1	PA9T	
LTR	PART NAME	QTY	MATERIAL	REMARK

GENAL TOLERANCE $\pm 0.2$	DRAW M. C. WANG	PART NO SDC1-041X-X-A/B/C-X
	DESIGN H. D. LI	TITLE DC POWER JACK (SMT)
	CHECKED Y. M. LU	
UNIT :mm	APPROVED J. F. KANG	宏揚精密有限公司 HOJAR PRECISION CO., LTD.