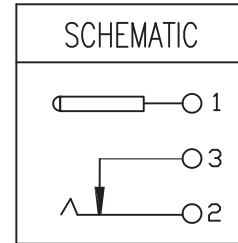
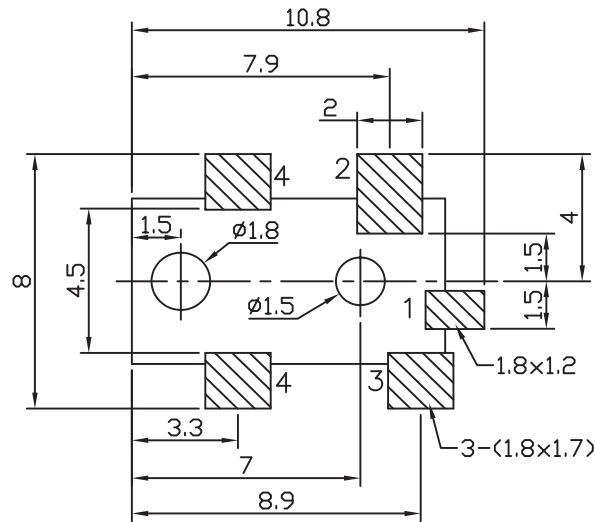


ORDER INFORMATION:

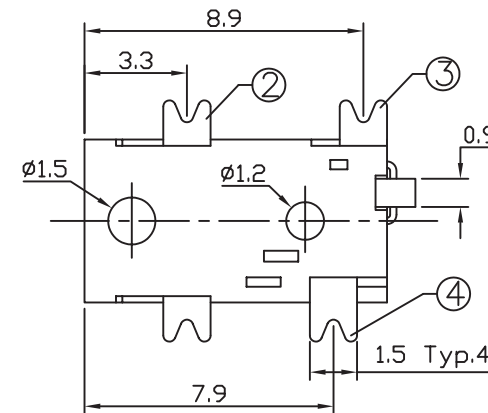
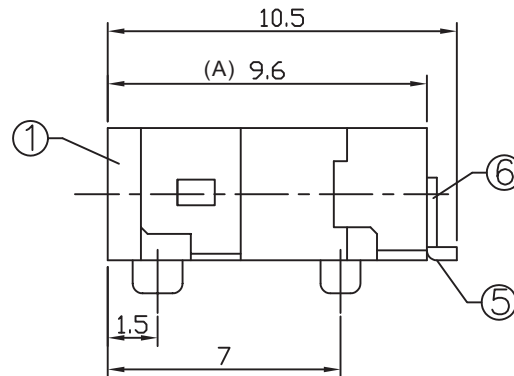
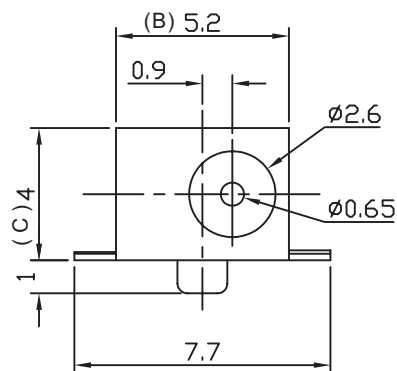
SDC1 - 051 $\frac{X}{a}$ - $\frac{X}{b}$ - $\frac{A/B/C}{c}$ - $\frac{X}{d}$

- a. Center Pin Diameter:
0:0.65 ϕ
- b. Post selection:
1: with post
- c. Length/Width/Height:
A/B/C (A=9.6,B=5.2,C=4.0) (standard)
- d. Pack selection:
R:Reel Pack



T:1.6 Dimensions of PC board holes

Tolerance : ± 0.1 (Printed-top view)



6	CURVE PIECE	1	BRONZE	MB:Cu Ag	PLATED
5	PIN	1	BRASS	MB:Cu Ni	PLATED
4	SPRING	1	BE-CU	MB:Cu Ag	PLATED
3	CURVE PIECE	1	BRASS	MB:Cu Ag	PLATED
2	CONTACT FOOT	1	BRASS	MB:Cu Ag	PLATED
1	HOUSING	1	PA9T		
LTR	PART NAME	QTY	MATERIAL	REMARK	

GENAL TOLERANCE ± 0.2	DRAW M. C. WANG	PART NO SDC1-051X-X-A/B/C-X
	DESIGN H. D. LI	TITLE DC POWER JACK (SMT)
	CHECKED Y. M. LU	
	APPROVED J. F. KANG	
UNIT :mm		宏揚精密有限公司 HOJAR PRECISION CO., LTD.