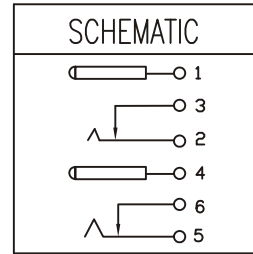
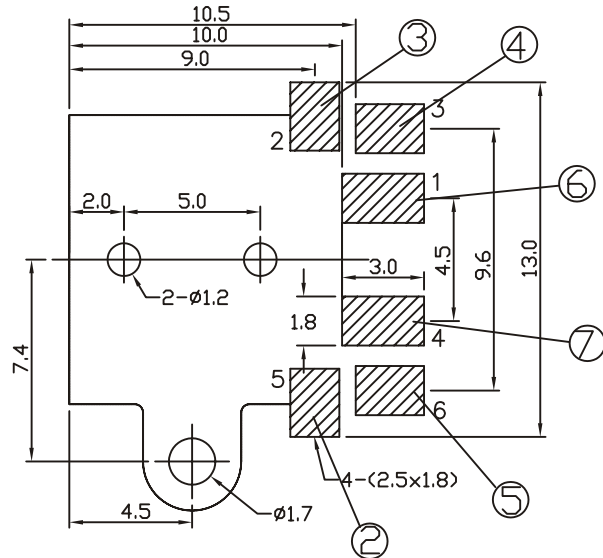


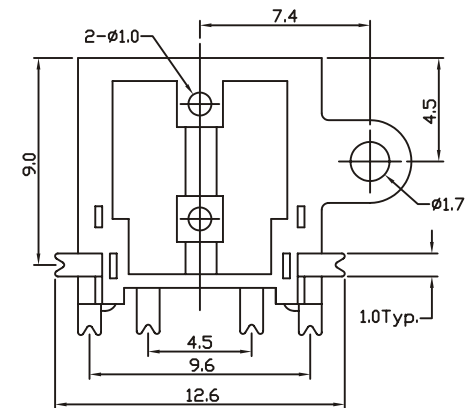
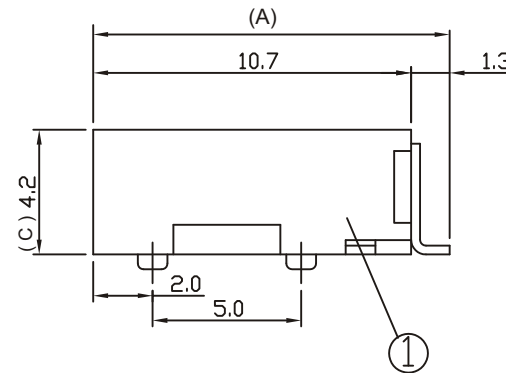
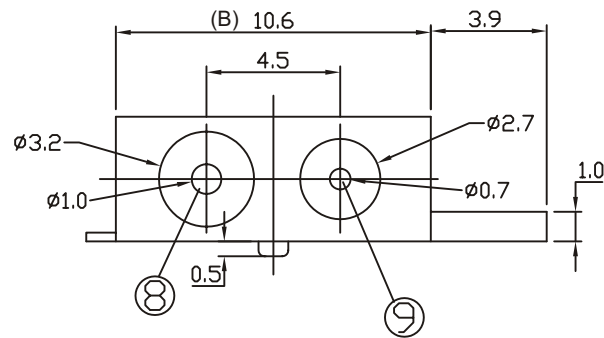
ORDER INFORMATION:

SDD1 - 061X X -X - A/B/C - X
 $\frac{\quad}{a} \frac{\quad}{b} \frac{\quad}{c} - \frac{\quad}{d} - \frac{\quad}{e}$


- a. Center Pin Diameter(8):
1:1.0 ϕ
- b. Center Pin Diameter(9):
0:0.7 ϕ
- d. Post selection:
1: with post
- e. Length/Width/Height:
A/B/C (A=12.0,B=10.6,C=4.2) (standard)
- f. Pack selection:
R:Reel Pack



T:1.6 Dimensions of PC board holes
 Tolerance : ± 0.1 (Printed-top view)



9	PIN	1	BRASS	MB:Cu Ni PLATED
8	PIN	1	BRASS	MB:Cu Ni PLATED
7	CONTACT FOOT	1	BRASS	MB:Cu Ag PLATED
6	CONTACT FOOT	1	BRASS	MB:Cu Ag PLATED
5	CURVE PIECE	1	BRASS	MB:Cu Ag PLATED
4	CURVE PIECE	1	BRASS	MB:Cu Ag PLATED
3	SPRING	1	Be-Cu	MB:Cu Ag PLATED
2	SPRING	1	Be-Cu	MB:Cu Ag PLATED
1	HOUSING	1	PA9T	
LTR	PART NAME	QTY	MATERIAL	REMARK

GENAL TOLERANCE ± 0.2	DRAW M. C. WANG	PART NO SDD1-061XX-X-A/B/C-X
	DESIGN H. D. LI	TITLE DC POWER JACK WITH LOCK (SMT)
	CHECKED Y. M. LU	
UNIT :mm	APPROVED J. F. KANG	 宏揚精密有限公司 HOJAR PRECISION CO., LTD.