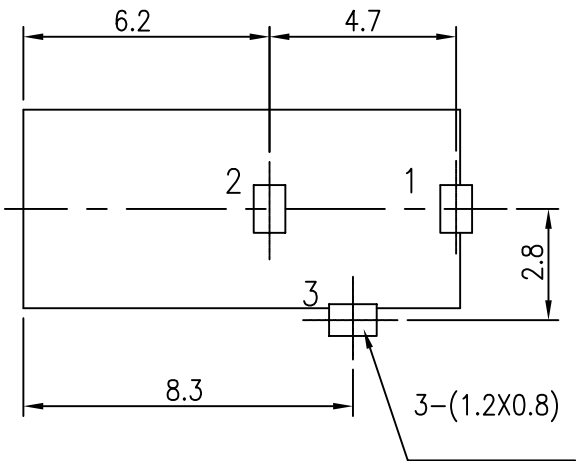


ORDER INFORMATION:

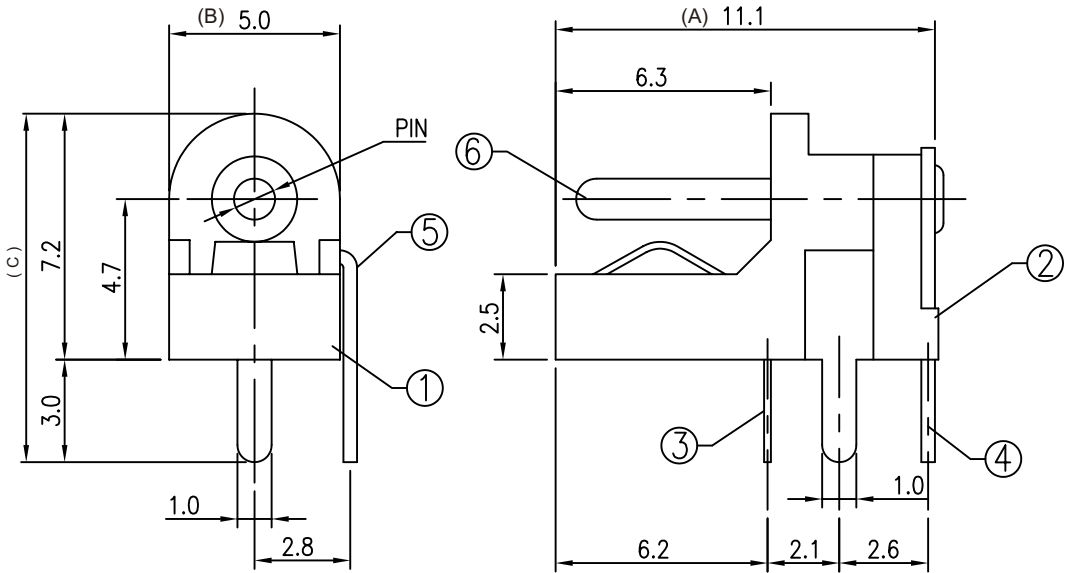
DC1 - 031 $\frac{X}{a}$ - $\frac{X}{b}$ - $\frac{A/B/C}{C}$ - $\frac{X}{d}$

- a. Center Pin Diameter:
1:1.0 ϕ
2:1.3 ϕ
- c. Post selection:
0: without post
- d.Length/Width/Height:
A/B/C (A=11.1,B=5.0,C=10.2) (standard)
- e. Pack selection:
B:Bag Pack



T:1.6 Dimensions of PC board holes
Tolerance : ± 0.1 (Printed-top view)

CAT. NO.	PIN	SCHEMATIC
DC1-0311	$\phi 1.0$	
DC1-0312	$\phi 1.3$	



6	PIN	1	BRASS	MB:Cu Ni PLATED
5	CURVE PIECE	1	BRASS	MB:Cu Ag PLATED
4	FLAT PIECE	1	BRASS	MB:Cu Ag PLATED
3	SPRING PIECE	1	SUS 301	
2	COVER	1	PBT	
1	HOUSING	1	PBT	
LTR	PART NAME	QTY	MATERIAL	REMARK

GENAL TOLERANCE ± 0.3	DRAW M. C. WANG	PART NO DC1-031X-X-A/B/C-X
	DESIGN H. D. LI	TITLE DC POWER JACK (DIP)
	CHECKED Y. M. LU	
UNIT :mm	APPROVED J. F. KANG	宏揚精密有限公司 HOJAR PRECISION CO., LTD.