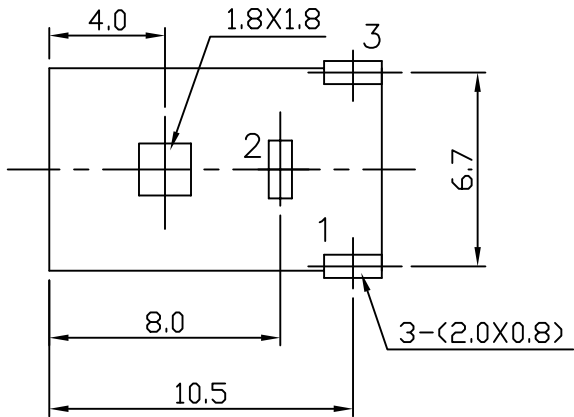


ORDER INFORMATION:

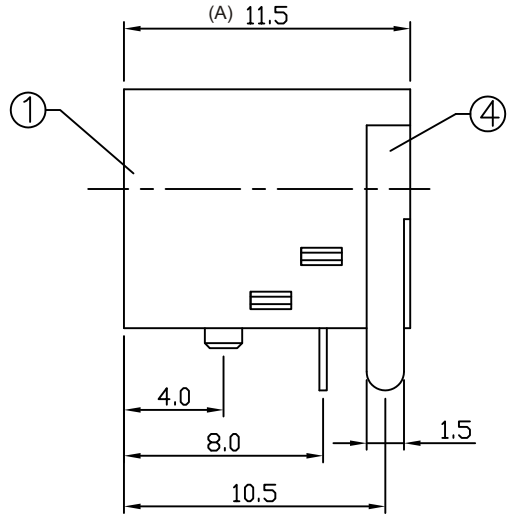
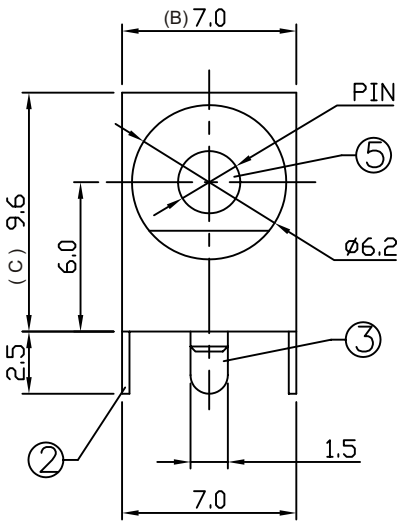
DC1 - 037 $\frac{X}{a}$ - $\frac{X}{b}$ - $\frac{A/B/C}{c}$ - $\frac{X}{d}$

- a. Center Pin Diameter:
 A:2.0 \emptyset
 B:2.5 \emptyset
 C:1.65 \emptyset
 D:2.35 \emptyset
- b. Post selection:
 1: with post
- c. Length/Width/Height:
 A/B/C (A=11.5,B=7.0,C=9.6) (standard)
- d. Pack selection:
 B:Bag Pack



T:1.6 Dimensions of PC board holes
 Tolerance : ± 0.1 (Printed-top view)

CAT. NO.	PIN	SCHEMATIC
DC1-037A	$\emptyset 2.0$	
DC1-037B	$\emptyset 2.5$	
DC1-037C	$\emptyset 1.65$	
DC1-037D	$\emptyset 2.35$	



5	PIN	1	BRASS	MB:Cu Ni PLATED
4	CONTACT FOOT	1	BRASS	MB:Cu Ag PLATED
3	SPRING	1	BRONZE	MB:Cu Ag PLATED
2	CURVE PIECE	1	BRASS	MB:Cu Ag PLATED
1	HOUSING	1	PBT	
LTR	PART NAME	QTY	MATERIAL	REMARK

GENAL TOLERANCE ± 0.3	DRAW M. C. WANG	PART NO DC1-037X-X-A/B/C-X
	DESIGN H. D. LI	TITLE DC POWER JACK (DIP)
	CHECKED Y. M. LU	
	APPROVED J. F. KANG	
UNIT :mm		宏揚精密有限公司 HOJAR PRECISION CO., LTD.