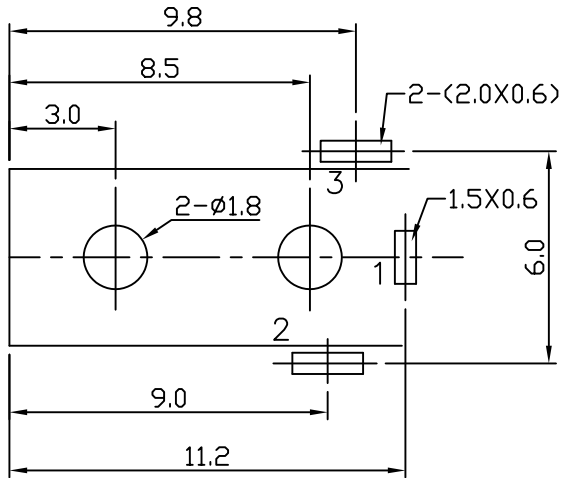


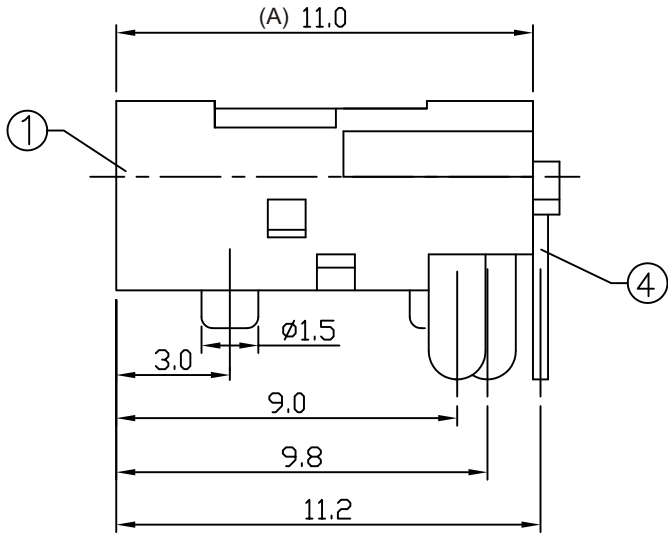
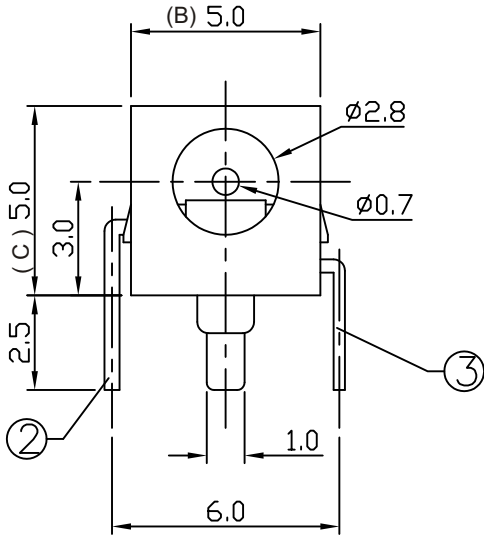
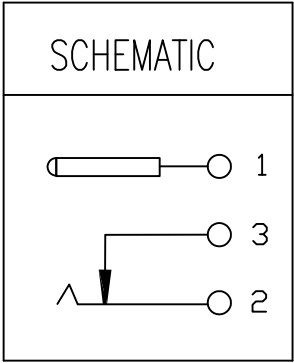
# ORDER INFORMATION:

DC1 - 038  $\frac{X}{a}$  -  $\frac{X}{b}$  -  $\frac{A/B/C}{c}$  -  $\frac{X}{d}$


- a. Center Pin Diameter:  
0:0.7  $\phi$
- b. Post selection:  
1: with post
- c. Length/Width/Height:  
A/B/C (A=11.0,B=5.0,C=5.0) (standard)
- d. Pack selection:  
B:Bag Pack



T:1.6 Dimensions of PC board holes  
Tolerance :  $\pm 0.1$ (Printed-top view)



4	SHUNT	1	BRASS	MB:Cu Ag PLATED
3	SPRING	1	65Mn STEEL	
2	PLAT PIECE	1	BRASS	MB:Cu Ag PLATED
1	HOUSING	1	PBT	
LTR	PART NAME	QTY	MATERIAL	REMARK

GENAL TOLERANCE $\pm 0.3$	DRAW M. C. WANG	PART NO DC1-038X-X-A/B/C-X
	DESIGN H. D. LI	TITLE DC POWER JACK (DIP)
	CHECKED Y. M. LU	 宏揚精密有限公司 HOJAR PRECISION CO., LTD.
UNIT :mm	APPROVED J. F. KANG	