

ORDER INFORMATION:

DC1 - 03A $\frac{X}{a}$ - $\frac{X}{b}$ - $\frac{A/B/C}{c}$ - $\frac{X}{d}$

a. Center Pin Diameter:

1:1.0 ϕ

2:1.3 ϕ

b. Post selection:

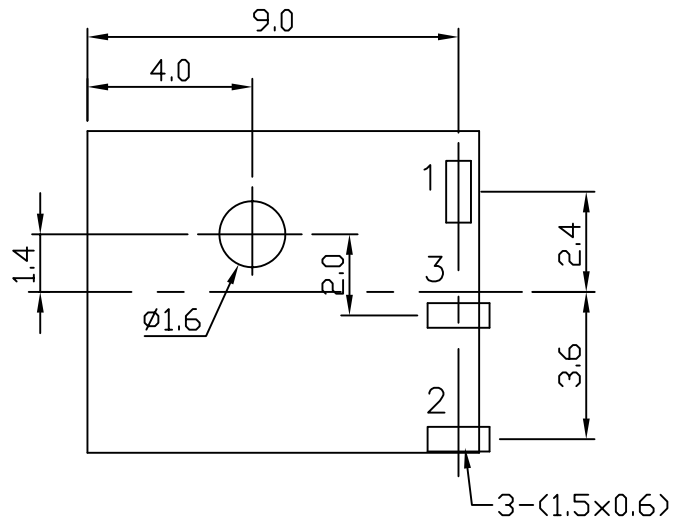
1: with post

c. Length/Width/Height:

A/B/C (A=9.5,B=7.8,C=5.0) (standard)

d. Pack selection:

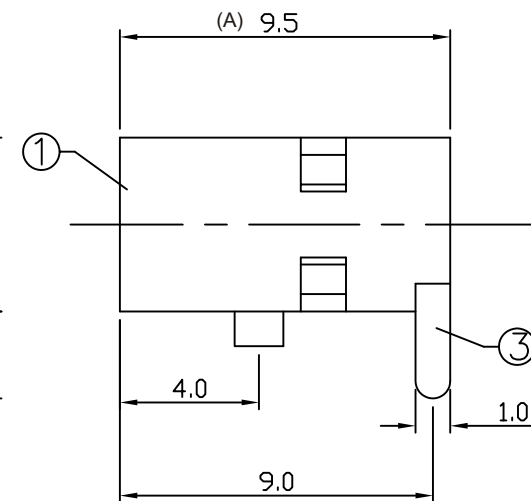
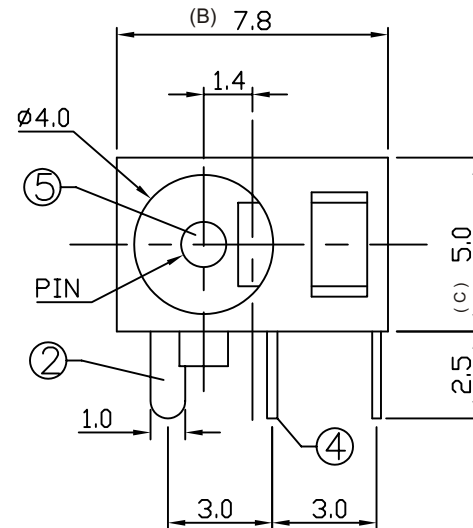
B:Bag Pack



T:1.6 Dimensions of PC board holes

Tolerance : ± 0.1 (Printed-top view)

CAT. NO.	PIN	SCHEMATIC
DC1-03A1	$\phi 1.0$	
DC1-03A2	$\phi 1.3$	



5	PIN	1	C2680	MB:Cu Ni PLATED
4	CURVE PIECE	1	C2680	MB:Cu Ag PLATED
3	SPRING	1	SUS 301	
2	FLAT PIECE	1	C2680	MB:Cu Ag PLATED
1	HOUSING	1	PBT	
LTR	PART NAME	QTY	MATERIAL	REMARK

GENERAL TOLERANCE ± 0.3	DRAW M. C. WANG	PART NO DC1-03AX-X-A/B/C-X
	DESIGN H. D. LI	TITLE DC POWER JACK (DIP)
	CHECKED Y. M. LU	
UNIT :mm	APPROVED J. F. KANG	宏揚精密有限公司 HOJAR PRECISION CO., LTD.