

VERSION

A

ORDER INFORMATION:

SFPCRB05 - $\frac{XX}{a}$ 1 - L - $\frac{X}{b}$

Note:

1.Material

- 1.1: Housing: LCP UL94-V0 Color:Nature.
- 1.2: Actuator: LCP UL94-V0 Color:Black.
- 1.3: Contact: Phosphor Bronze.
- 1.4: LEG: Brass.

2.Plating


- 2.1: Contact: Matte Tin Or Gold Plating Nickel Overall .
- 2.2: LEG: Matte Tin Plating Over Nickel.

3.Rating:

- 3.1: Operating Voltage: 50V AC/DC.
- 3.2: Current Rating: 0.4A AC/DC.
- 3.3: Operating Temperature:-25°C~+85°C.

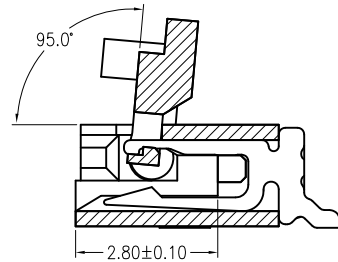
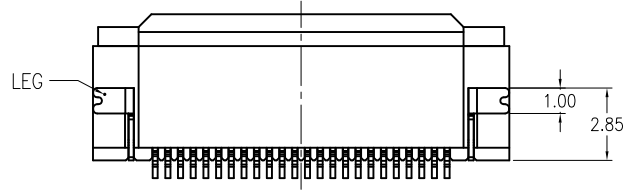
a. NO . Of Contacts
04~64

b. Pack selection:
T : Tube Pack
R : Reel Pack

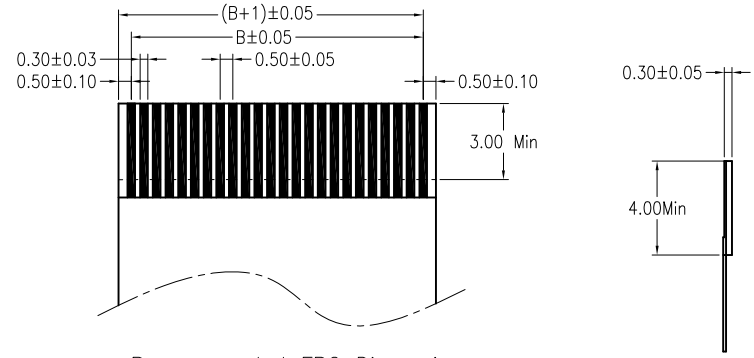
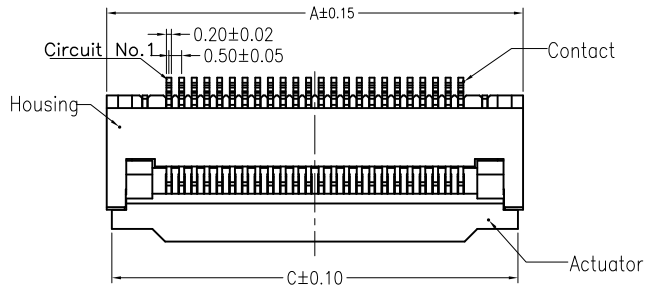
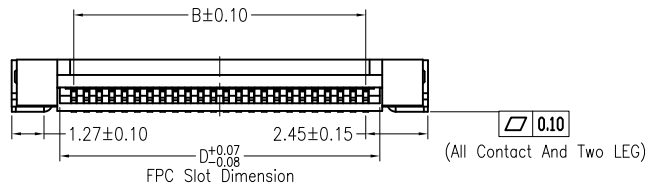
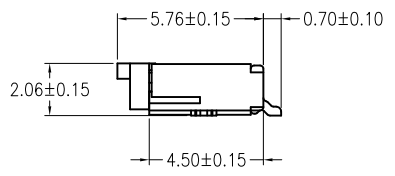
GENAL TOLERANCE X. ± .X ± .XX ± .XXX ±	DRAW 2004/08/11 DATE H. D. LI	PART NO SFPCRB05-XX1-L-X
	DESIGN H. D. LI	TITLE FPC Connector0.5mm Press c Type H:2.0
	CHECKED Y. M. LU	
	APPROVED J. F. KANG	 宏揚精密有限公司 HOJAR PRECISION CO., LTD.
UNIT :mm		

VERSION

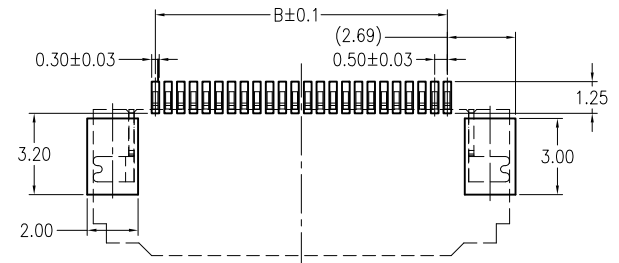
A



Section A-A
Scale 2:1



Recommended FPC Dimension



FPC/FFC Insert Direction
Recommended P.C.B Layout

No. of Contacts	Dimension			
	A	B	C	D
04	6.40	1.50	6.00	2.60
05	6.90	2.00	6.50	3.10
06	7.40	2.50	7.00	3.60
07	7.90	3.00	7.50	4.10
08	8.50	3.50	8.00	4.60
09	8.90	4.00	8.50	5.10
10	9.40	4.50	9.00	5.60
11	9.90	5.00	9.50	6.10
12	10.40	5.50	10.00	6.60
13	10.90	6.00	10.50	7.10
14	11.40	6.50	11.00	7.60
15	11.90	7.00	11.50	8.10
16	12.40	7.50	12.00	8.60
17	12.90	8.00	12.50	9.10
18	13.40	8.50	13.00	9.60
19	13.90	9.00	13.50	10.10
20	14.40	9.50	14.00	10.60
21	14.90	10.00	14.50	11.10
22	15.40	10.50	15.00	11.60
23	15.90	11.00	15.50	12.10
24	16.40	11.50	16.00	12.60
25	16.90	12.00	16.50	13.10
26	17.40	12.50	17.00	13.60
27	17.90	13.00	17.50	14.10
28	18.40	13.50	18.00	14.60
29	18.90	14.00	18.50	15.10
30	19.40	14.50	19.00	15.60
31	19.90	15.00	19.50	16.10
32	20.40	15.50	20.00	16.60
33	20.90	16.00	20.50	17.10
34	21.40	16.50	21.00	17.60
35	21.90	17.00	21.50	18.10
36	22.40	17.50	22.00	18.60
37	22.90	18.00	22.50	19.10
38	23.40	18.50	23.00	19.60
39	23.90	19.00	23.50	20.10
40	24.40	19.50	24.00	20.60
41	24.90	20.00	24.50	21.10
42	25.40	20.50	25.00	21.60
43	25.90	21.00	25.50	22.10
44	26.40	21.50	26.00	22.60
45	26.90	22.00	26.50	23.10
46	27.40	22.50	27.00	23.60
47	27.90	23.00	27.50	24.10
48	28.40	23.50	28.00	24.60
49	28.90	24.00	28.50	25.10
50	29.40	24.50	29.00	25.60
51	29.90	25.00	29.50	26.10
52	30.40	25.50	30.00	26.60
53	30.90	26.00	30.50	27.10
54	31.40	26.50	31.00	27.60
55	31.90	27.00	31.50	28.10
56	32.40	27.50	32.00	28.60
57	32.90	28.00	32.50	29.10
58	33.40	28.50	33.00	29.60
59	33.90	29.00	33.50	30.10
60	34.40	29.50	34.00	30.60
61	34.90	30.00	34.50	31.10
62	35.40	30.50	35.00	31.60
63	35.90	31.00	35.50	32.10
64	36.40	31.50	36.00	32.60

GENERAL TOLERANCE X. ± .XX ± .XX ± .XXX ±	DRAW DATE 2004/08/11 H. D. LI	PART NO SFPCRB05-XX1-L-X
	DESIGN H. D. LI	
	CHECKED Y. M. LU	TITLE FPC Connector 0.5mm Press c Type H:2.0
	APPROVED J. F. KANG	宏揚精密有限公司 HOJAR PRECISION CO., LTD.
UNIT :mm		