

SPECIFICATIONS

1. MATERIAL :
INSUATOR : GLASS-REINFORCED THERMOPLASTIC.
CONTACT : COPPER ALLOY.
PLATING : ALL TIN,LEAD FREE.
2. ELECTRICAL :
CURRENT RATING : 0.5 AMP
DIELECTRIC WITHSTANDING VOLATAGE : 500 VAC MIN.
INSUATION RESISTANGE : 1000 MEGAOHMS MIN.
CONTACT RESISTANGE : 30MILLOHMS MAX.
3. ENVIRONMENTAL :
TEMPERATURE RANGE : -55°C TO +85°C


ORDER INFORMATION:

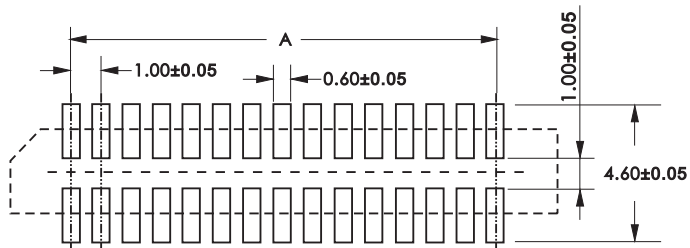
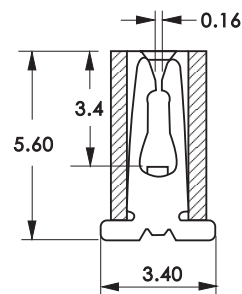
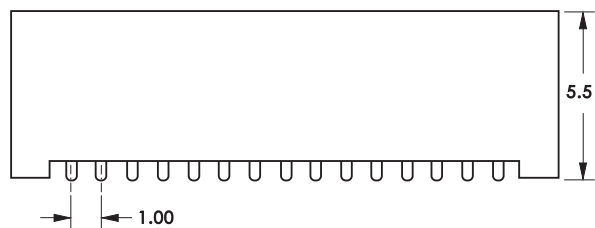
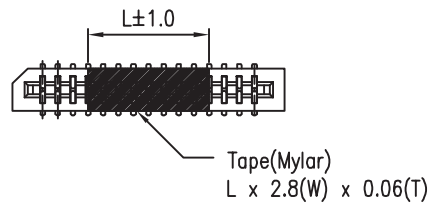
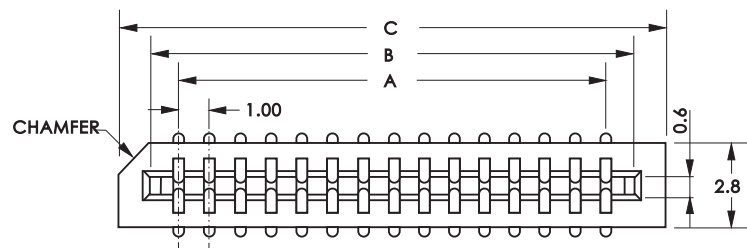
$$\text{SFPC10-} \frac{\text{XX}}{\text{a}} \text{4 - DV -} \frac{\text{T}}{\text{b}}$$

- a. Pin of numbers:
04 ~ 30
- b. Pack:
T : Tube
R : Reel

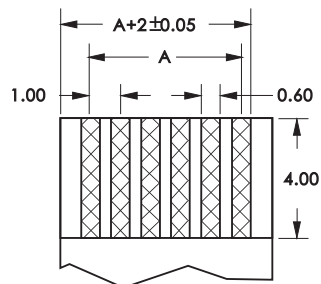
VERSION & EC DESCRIPTION

DATE	VERSION	PAGE	DESCRIPTION
2004/05/21	A	26-27	Add SFPC10-XX4-DV-T Plan
2004/10/19	A	26-27	Add genaltolerance data
2006/05/25			修改尺寸

GENERAL TOLERANCE X. ± 0.40 .X ± 0.30 .XX ± 0.20 .XXX ± 0.10	VER DRE. 2006/05/25 H. D. LI	PART NO SFPC10 - XX 4 - DV - T
	DESIGN H. D. LI	TITLE 1.0mm FPC SMD TOP ENTRY DUAL CONTACT NON ZIF
	CHECKED Y. M. LU	
UNIT :mm	APPROVED J. F. KANG	 宏揚精密有限公司 HOJAR PRECISION CO., LTD.




RECOMMENDED PCB LAYOUT



FPC/FFC = 0.30 ± 0.05

Circuits	Dimension				Circuits	Dimension			
	A	B	C	L		A	B	C	L
				4	20	19.00	21.1	23	12
					21	20.00	22.1	24	
4	3.00	5.1	7		22	21.00	23.1	25	
5	4.00	6.1	8		23	22.00	24.1	26	
6	5.00	7.1	9	24	23.00	25.1	27		
7	6.00	8.1	10	25	24.00	26.1	28		
8	7.00	9.1	11	26	25.00	27.1	29		
9	8.00	10.1	12	27	26.00	28.1	30		
10	9.00	11.1	13	28	27.00	29.1	31		
11	10.00	12.1	14	29	28.00	30.1	32		
12	11.00	13.1	15	30	29.00	31.1	33		
13	12.00	14.1	16						
14	13.00	15.1	17						
15	14.00	16.1	18	12					
16	15.00	17.1	19						
17	16.00	18.1	20						
18	17.00	19.1	21						
19	18.00	20.1	22						

GENAL TOLERANCE X. ± 0.40 .X ± 0.30 .XX ± 0.20 .XXX ± 0.10	VER DRE. 2006/05/25 H. D. LI	PART NO SFPC10 - XX 4 - DV - T
	DESIGN H. D. LI	TITLE 1.0mm FPC SMD TOP ENTRY DUAL CONTACT NON ZIF
	CHECKED Y. M. LU	APPROVED J. F. KANG
	UNIT :mm	 宏揚精密有限公司 HOJAR PRECISION CO., LTD.