


## SPECIFICATIONS

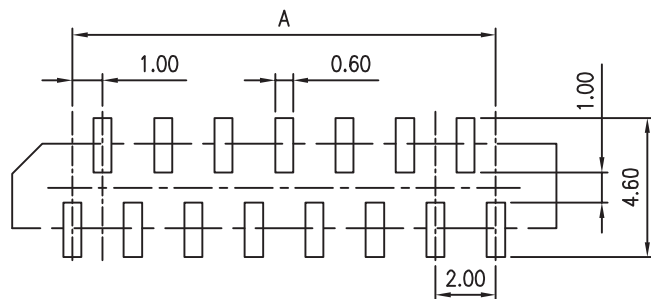
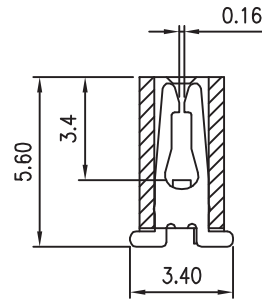
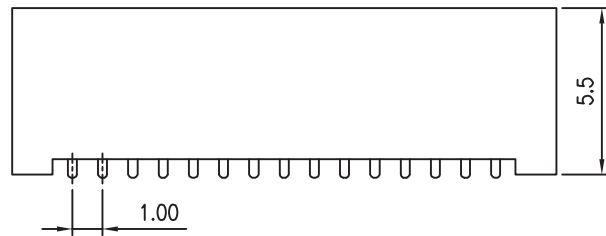
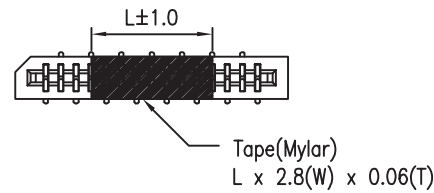
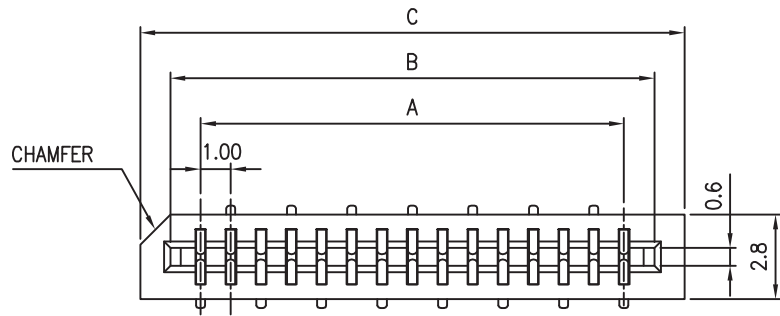
1. MATERIAL :  
 INSULATOR : GLASS-REINFORCED THERMOPLASTIC.  
 CONTACT : COPPER ALLOY.  
 PLATING : ALL TIN,LEAD FREE.
2. ELECTRICAL :  
 CURRENT RATING : 0.5 AMP  
 DIELECTRIC WITHSTANDING VOLATAGE : 500 VAC MIN.  
 INSULATION RESISTANCE : 1000 MEGAOHMS MIN.  
 CONTACT RESISTANCE : 30 MILLOHMS MAX.
3. ENVIRONMENTAL :  
 TEMPERATURE RANGE : -55°C TO +85°C

## ORDER INFORMATION:

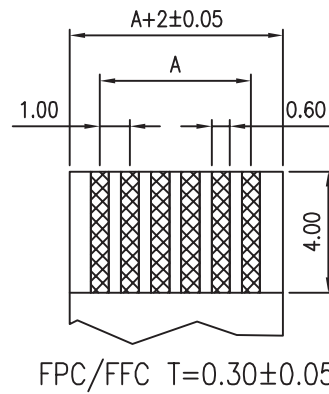
SFPC10-  $\frac{XX}{a}$  4 - DV - D -  $\frac{T}{b}$

- a. Pin of numbers:  
04 ~ 30
- b. Pack:  
T : Tube  
R : Reel

GENAL TOLERANCE X. ± 0.40 .X ± 0.30 .XX ± 0.20 .XXX ± 0.10	VER DRE. 2006/05/25 H. D. LI	PART NO SFPC10 - XX 4 - DV - D - T
	DESIGN H. D. LI	TITLE 1.0mm FPC SMD TOP ENTRY DUAL CONTACT NON ZIF
	CHECKED Y. M. LU	
	APPROVED J. F. KANG	 宏揚精密有限公司 HOJAR PRECISION CO., LTD.
UNIT :mm		



TOLERANCES: ±0.05  
RECOMMENDED PCB LAYOUT



Circuits	Dimension					Circuits	Dimension				
	A	B	C	L			A	B	C	L	
4	3.00	5.1	7	4	20	19.00	21.1	23	12		
	5	4.00	6.1		8	21	20.00	22.1		24	
		6	5.00		7.1	9	22	21.00		23.1	25
			7		6.00	8.1	10	23		22.00	24.1
8	7.00	9.1	11	24	23.00	25.1	27				
9	8.00	10.1	12	25	24.00	26.1	28				
10	9.00	11.1	13	8	26	25.00	27.1	29			
11	10.00	12.1	14		27	26.00	28.1	30			
12	11.00	13.1	15		28	27.00	29.1	31			
13	12.00	14.1	16		29	28.00	30.1	32			
14	13.00	15.1	17	12	30	29.00	31.1	33			
15	14.00	16.1	18								
16	15.00	17.1	19								
17	16.00	18.1	20								
18	17.00	19.1	21								
19	18.00	20.1	22								

GENAL TOLERANCE X. ± 0.40 .X ± 0.30 .XX ± 0.20 .XXX ± 0.10	VER DRE. 2006/05/25 H. D. LI	PART NO SFPC10 - XX 4 - DV - D - T
	DESIGN H. D. LI	TITLE 1.0mm FPC SMD TOP ENTRY DUAL CONTACT NON ZIF
	CHECKED Y. M. LU	
	APPROVED J. F. KANG	
UNIT :mm		宏揚精密有限公司 HOJAR PRECISION CO., LTD.