

ORDER INFORMATION:

SWB125027- \overline{XX} C - WN - R
 \overline{a} \overline{b}

■ **SPECIFICATIONS**

- Voltage Rating : 125V AC/DC
- Current Rating : 1A AC/DC
- Withstanding Voltage : 250V AC/minute
- Insulation Resistance : 100MΩ min
- Temperature Range : - 25°C to + 85°C
- Contact Resistance : 20mΩ max

■ **WAFER**


- Part No. : JS-1259-XX
- Poles : 2~30
- Material : Contact : Copper Alloy ; Tin Plated
 Mounted Ear : Brass ; Tin Plated
 Base : Nylon 9T UL-94V-0
- Q' ty : 1000 pcs./Reel

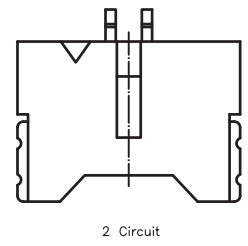
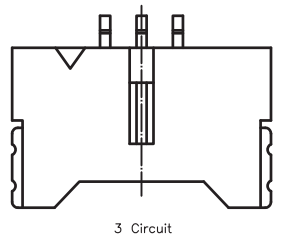
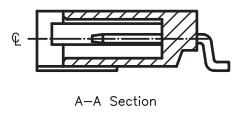
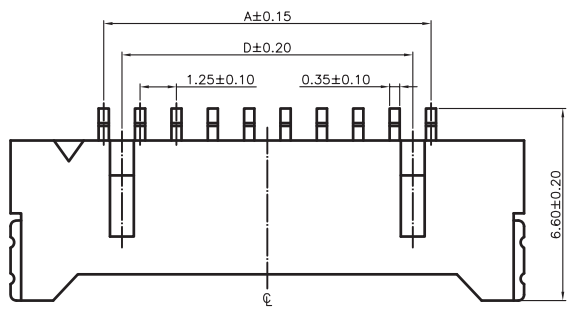
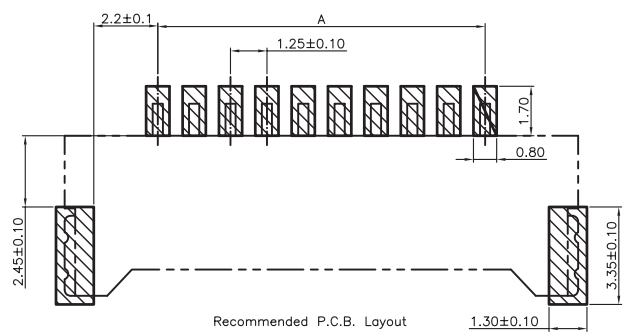
a. Pin of numbers:

2 ~ 30

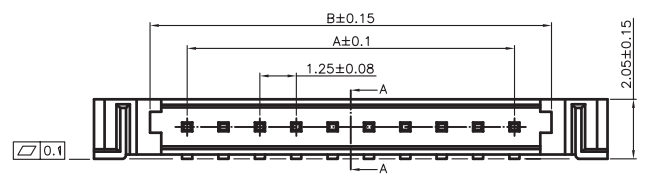
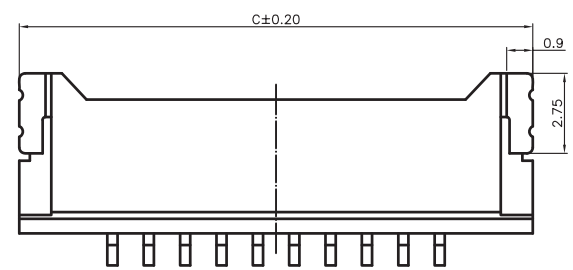
b. Pack selection :

R : Reel Pack

GENAL TOLERANCE	DATE	PART NO
.X ± 0.3	H. D. LI	SWB125027-XXC-WN-R
.XX ± 0.2	DESIGN	TITLE
.XXX ± 0.1	H. D. LI	1.25mm Crimp Style Connectors Wafer (SMT)
	CHECKED	
	Y. M. LU	
	APPROVED	
UNIT :mm	J. F. KANG	 宏揚精密有限公司 HOJAR PRECISION CO., LTD.



Poles	Dimensions			
	A	B	C	D
2	1.25	3.80	7.65	
3	2.50	5.05	8.90	
4	3.75	6.30	10.15	2.50
5	5.00	7.55	11.40	3.75
6	6.25	8.80	12.65	5.00
7	7.50	10.05	13.90	6.25
8	8.75	11.30	15.15	7.50
9	10.00	12.55	16.40	8.75
10	11.25	13.80	17.65	10.00
11	12.50	15.05	18.90	11.25
12	13.75	16.30	20.15	12.50
13	15.00	17.55	21.40	13.75
14	16.25	18.80	22.65	15.00
15	17.50	20.05	23.90	16.25
16	18.75	21.30	25.15	17.50
17	20.00	22.55	26.40	18.75
18	21.25	23.80	27.65	20.00
19	22.50	25.05	28.90	21.25
20	23.75	26.30	30.15	
21	25.00	27.55	31.40	
22	26.25	28.80	32.65	
23	27.50	30.05	33.90	
24	28.75	31.30	35.15	
25	30.00	32.55	36.40	22.50
26	31.25	33.80	37.65	
27	32.50	35.05	38.90	
28	33.75	36.30	40.15	
29	35.00	37.55	41.40	
30	36.25	38.80	42.65	



GENAL TOLERANCE .X ± 0.3 .XX ± 0.2 .XXX ± 0.1	DATE H. D. LI	PART NO SWB125027-XXC-WN-R
	DESIGN H. D. LI	TITLE 1.25mm Crimp Style Connectors Wafer (SMT)
	CHECKED Y. M. LU	宏揚精密有限公司 HOJAR PRECISION CO., LTD.
UNIT :mm	APPROVED J. F. KANG	