

SPECIFICATIONS

Voltage Rating : 250V AC/max

Current Rating : 3A AC,DC

Insulator Resistance : 1000 M Ω / min

Contact Resistance : 10 m Ω max.

Temperature Range : -25 $^{\circ}$ C to +85 $^{\circ}$ C

Terminal Material : Brass/Tin Plated

Material : Nylon 66 , UL94V-0

ORDER INFORMATION:

WB250X - $\frac{XX}{a}$ H - K - $\frac{X}{b}$

a. Pin of numbers:

02 ~ 20

b. Pack :

T : Tube


R : Reel

B : Bag

C : Contron

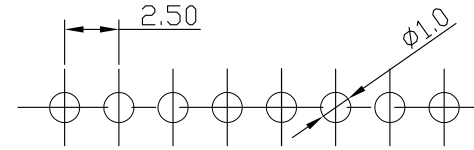
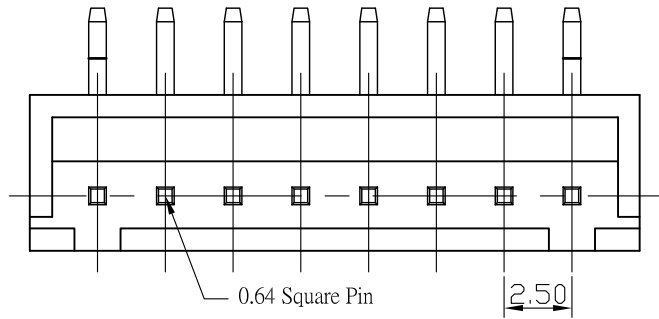
VERSION & EC DESCRIPTION

DATE	VERSION	PAGE	DESCRIPTION
2005/06/06	A	10-11	Add WB250X-XXH-K-X Plan

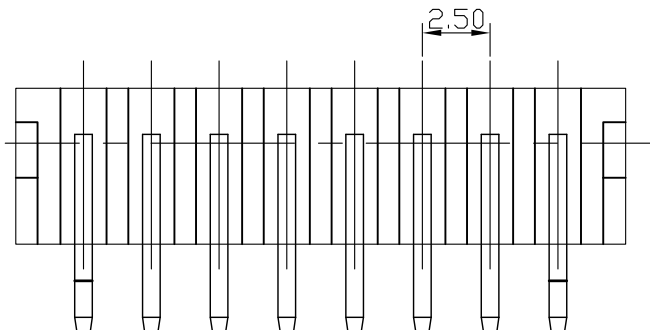
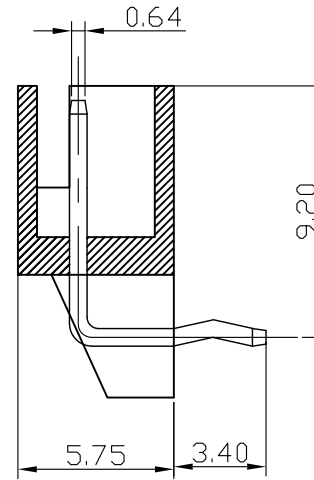
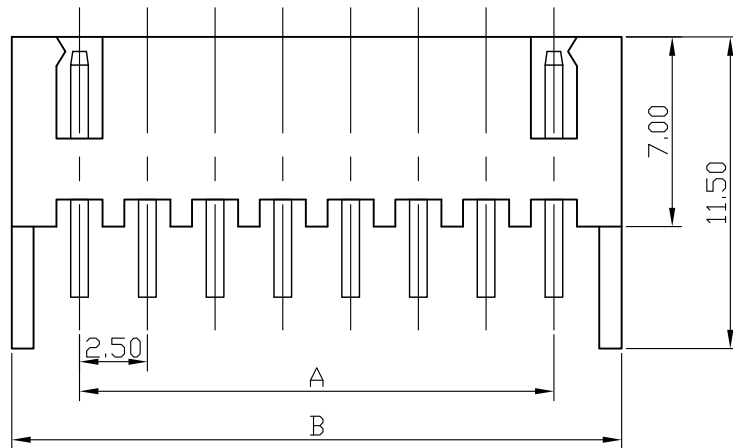
GENAL TOLERANCE	DRAW DATE	2005/06/06	PART NO
X \pm X.XX	H. D. LI		WB250X - XX H - K - X
.X \pm 0.5	DESIGN	H. D. LI	TITLE
.XX \pm 0.1	CHECKED	Y. M. LU	Pitch 2.5mm Wire to Board Header DIP90 Type(With Kink)
.XXX \pm X.XX	APPROVED	J. F. KANG	
UNIT :mm			 宏揚精密有限公司 HOJAR PRECISION CO. : LTD.

VERSION


A



RECOMMENDED P.C. BOARD HOLE DIMM.



Poles	Dimension mm (in.)		Note.
	A	B	
2	2.50 (0.098)	7.50 (0.295)	
3	5.00 (0.197)	10.00 (0.394)	
4	7.50 (0.295)	12.50 (0.492)	
5	10.00 (0.394)	15.00 (0.591)	
6	12.50 (0.492)	17.50 (0.689)	
7	15.00 (0.591)	20.00 (0.787)	
8	17.50 (0.689)	22.50 (0.886)	
9	20.00 (0.787)	25.00 (0.984)	
10	22.50 (0.886)	27.50 (1.802)	
11	25.00 (0.984)	30.00 (1.181)	
12	27.50 (1.802)	32.50 (1.280)	
13	30.00 (1.181)	35.00 (1.378)	
14	32.50 (1.280)	37.50 (1.476)	
15	35.00 (1.378)	40.00 (1.575)	
16	37.50 (1.476)	42.50 (1.673)	
17	40.00 (1.575)	45.00 (1.772)	
18	42.50 (1.673)	47.50 (1.870)	
19	45.00 (1.772)	50.00 (1.969)	
20	47.50 (1.870)	52.50 (2.067)	

GENERAL TOLERANCE X ± X.XX .X ± 0.5 .XX ± 0.1 .XXX ± X.XX	DRAW DATE	2005/06/06 H. D. LI	PART NO WB250X - XX H - K - X
	DESIGN	H. D. LI	
	CHECKED	Y. M. LU	Pitch 2.5mm Wire to Board Header DIP90 Type(With Kink)
UNIT :mm	APPROVED	J. F. KANG	 宏揚精密有限公司 HOJAR PRECISION CO. : LTD.