


## ORDER INFORMATION:

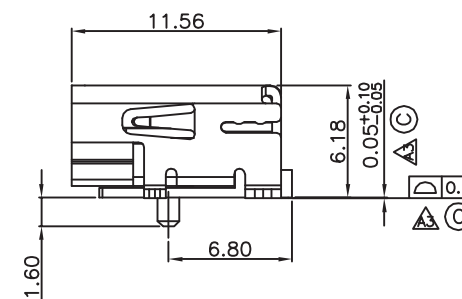
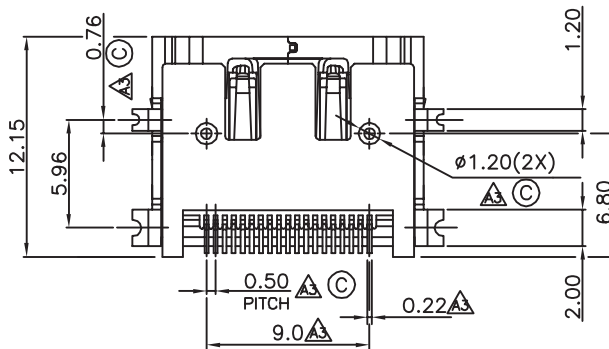
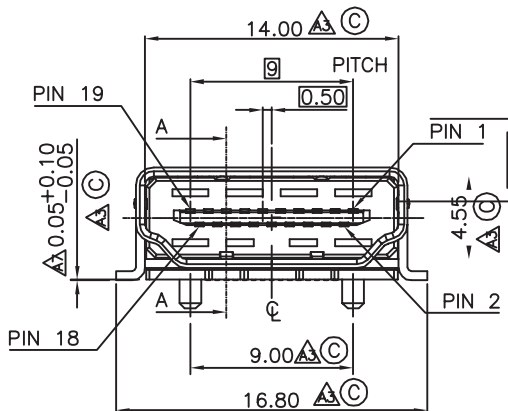
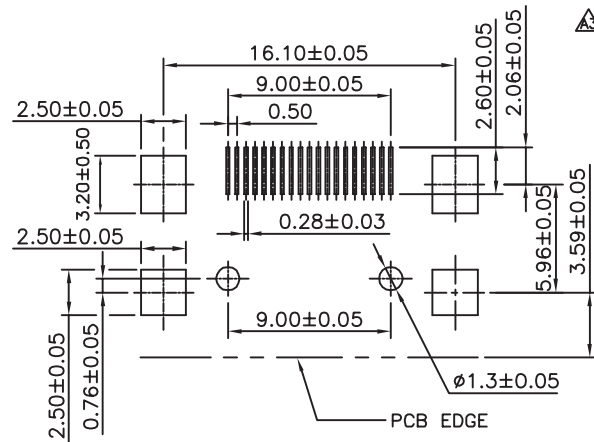
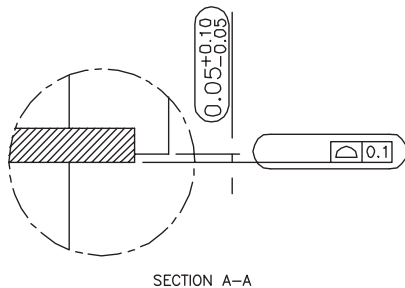
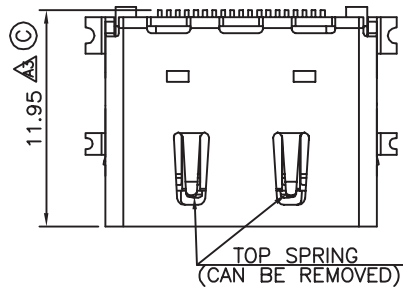
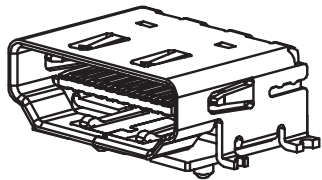
SHDMI1 -  $\frac{19}{a} \frac{A}{b} - \frac{XX}{c} \frac{XX}{d} - \frac{XX}{e} \frac{X}{f} - \frac{X}{g}$

### Material and Finish:

1. Insulator Material: L.C.P. +30% Glass Filled, UL94V-0, Color: Black
2. Contact Material: Brass (C2680-EH), t=0.2mm
3. Shell Material: Brass (C2680 1/2H), t=0.5mm
4. Contact Area Plated: 15u" Selective Gold For One Side  
Plated Over 50u" Nickel
5. Solder Area Plated: 100u" Tin Plated For Double Sides  
Over 50u" Nickel
6. Current Rating: 0.5 Amp Min.
7. Insulation Resistance: Unmated: 100 Mohms Min.  
Mated: 10 Mohms Min.
8. Contact Resistance: 10 mohms Max.
9. Dielectric Withstanding Voltage: 300V AC
10. Operation Temperature: -55°C to +85°C
- ③ 11. Control Dimensions Indicated From ©

- a. Pin of numbers:  
19
- b. Shell Type :  
A : A=SMD
- c. Contact Plated selection :  
1 : Selective Gold Flash  
2 : Selective Gold 15u" (Normal)  
3 : Selective Gold 30u"
- d. Shell Plated selection :  
1 : Nickel (standard)  
2 : Gold Flash
- f. Plastic Color :  
B : black
- g. Plastic material  
L : L.C.P.
- h. Pack selection:  
D: Disk Pack  
R: Reel Pack

GENERAL TOLERANCE	DRAW 2006/12/25 M. C. WANG	PART NO SHDMI1-19A-XX-XX-X
X. ± 0.30 .X ± 0.25 .XX ± 0.20	DESIGN H. D. LI	TITLE HDMI CONNECTOR RIGHT ANGLE SMD JACK W/O FLANGE W/POLARIZING PEG
	CHECKED Y. M. LU	
	APPROVED J. F. KANG	 宏揚精密有限公司 HOJAR PRECISION CO., LTD.
UNIT :mm		



GENAL TOLERANCE X. $\pm$ 0.30 .X $\pm$ 0.25 .XX $\pm$ 0.20	DRAW 2006/12/25 M. C. WANG	PART NO SHDMI1-19A-XX-XX-X
	DESIGN H. D. LI	TITLE HDMI CONNECTOR RIGHT ANGLE SMD JACK W/O FLANGE W/POLARIZING PEG
	CHECKED Y. M. LU	
UNIT :mm	APPROVED J. F. KANG	宏揚精密有限公司 HOJAR PRECISION CO., LTD.